

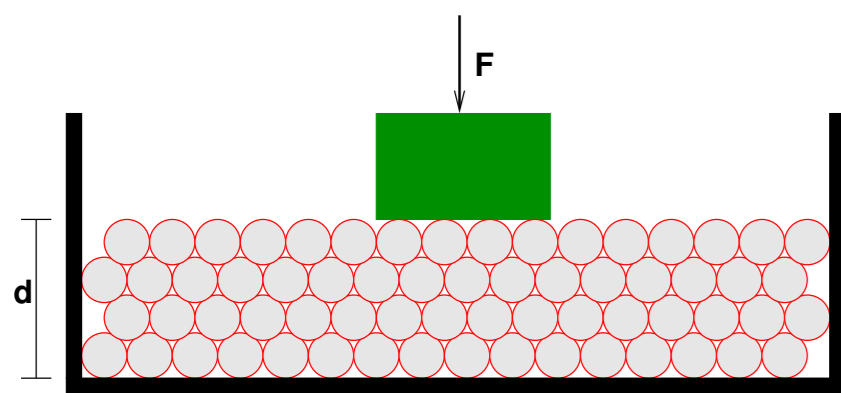


Stress Propagation in Sand Beds

A. Schinner, K. Kassner

ITP Universität Magdeburg, Postfach 4120, 39016 Magdeburg

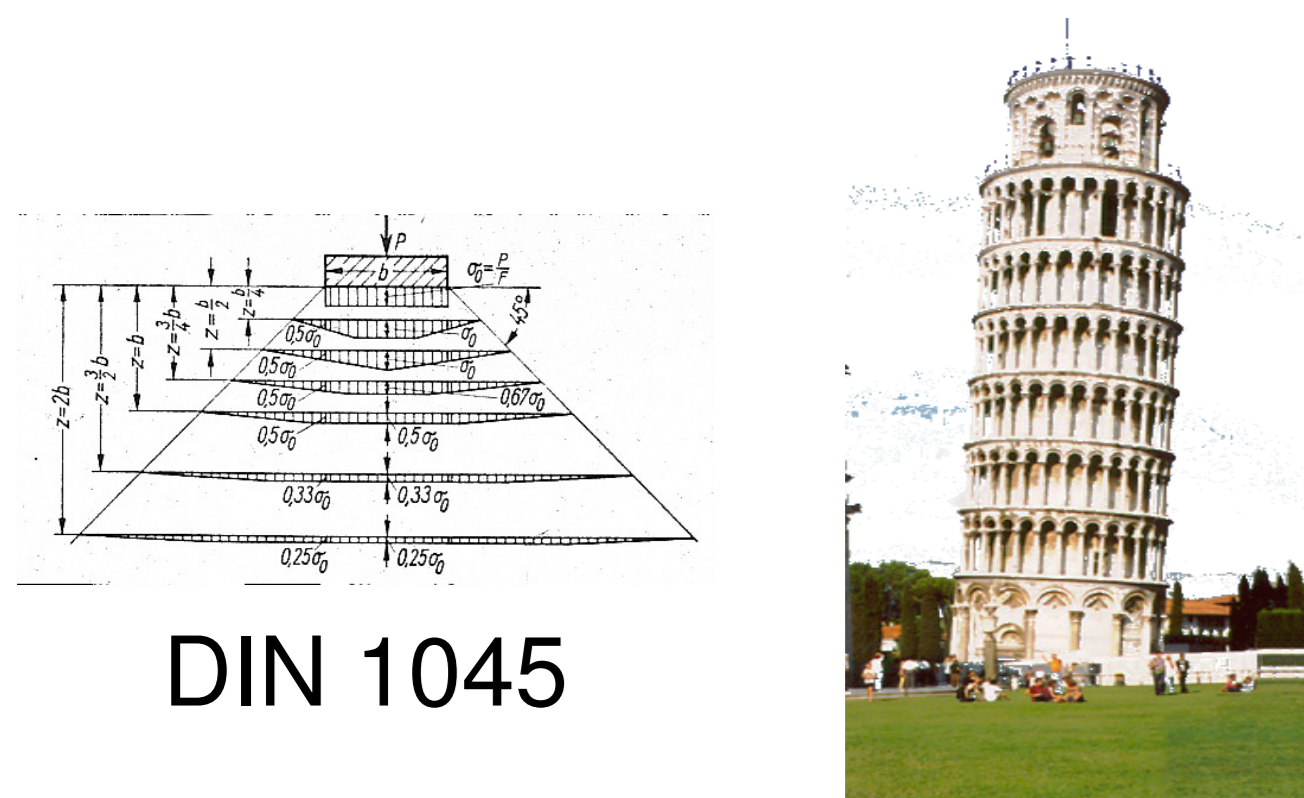
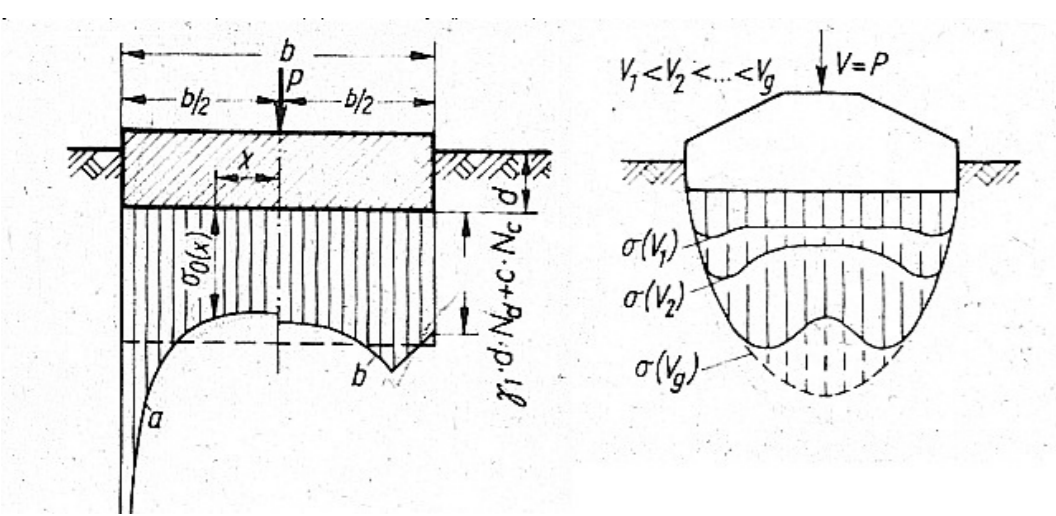
The Problem



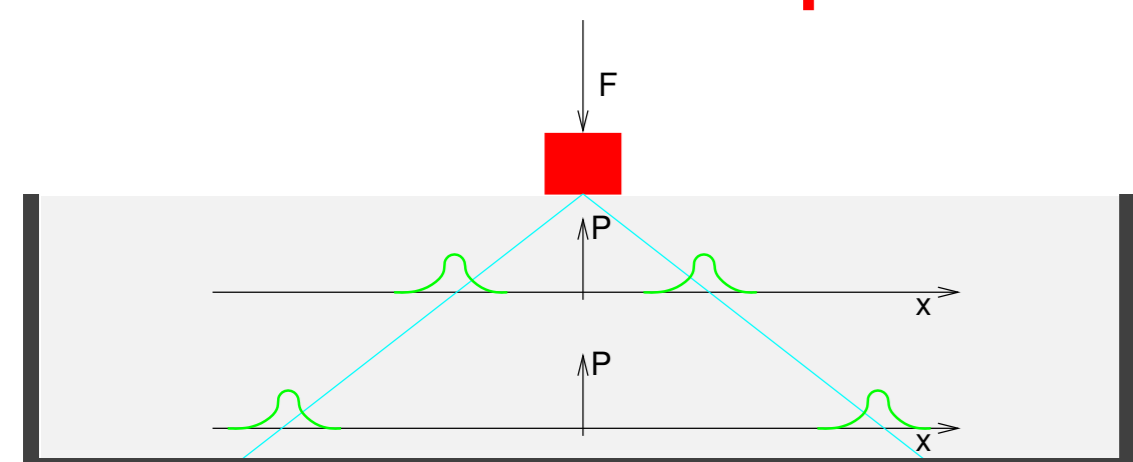
What is the influence of **disorder** and **thickness** on the
 -pressure distribution
 -force network ?

Soil Mechanics

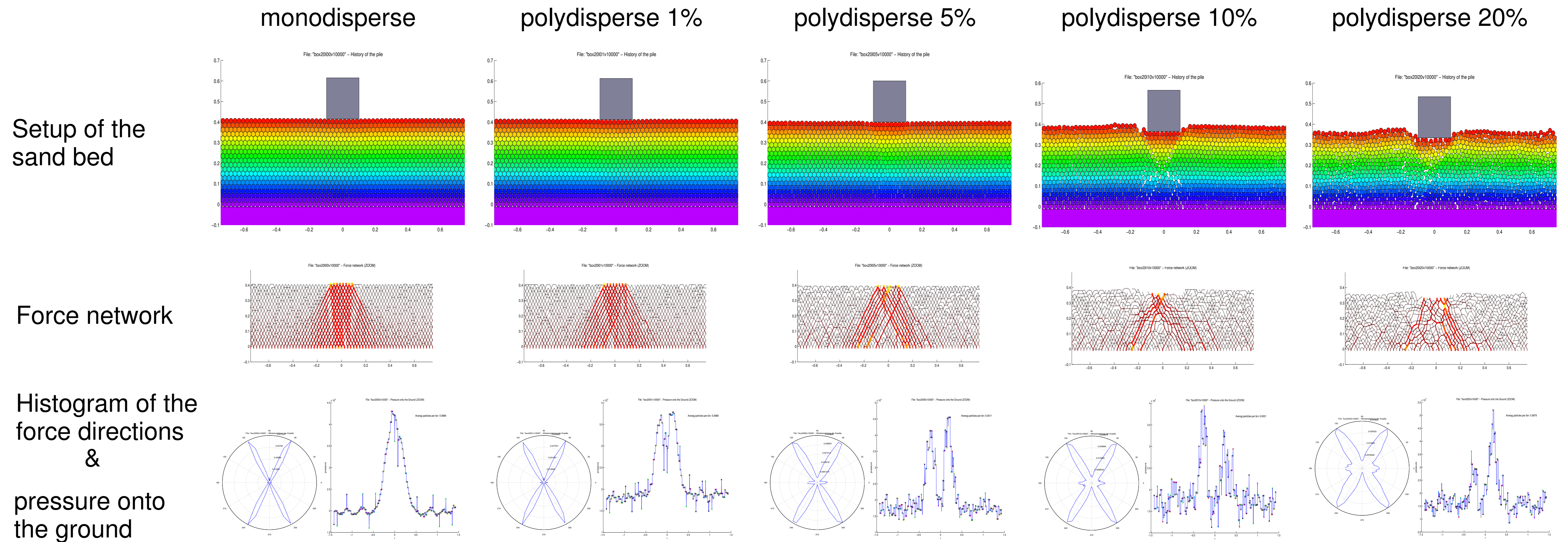
Foundation of buildings is an important problem



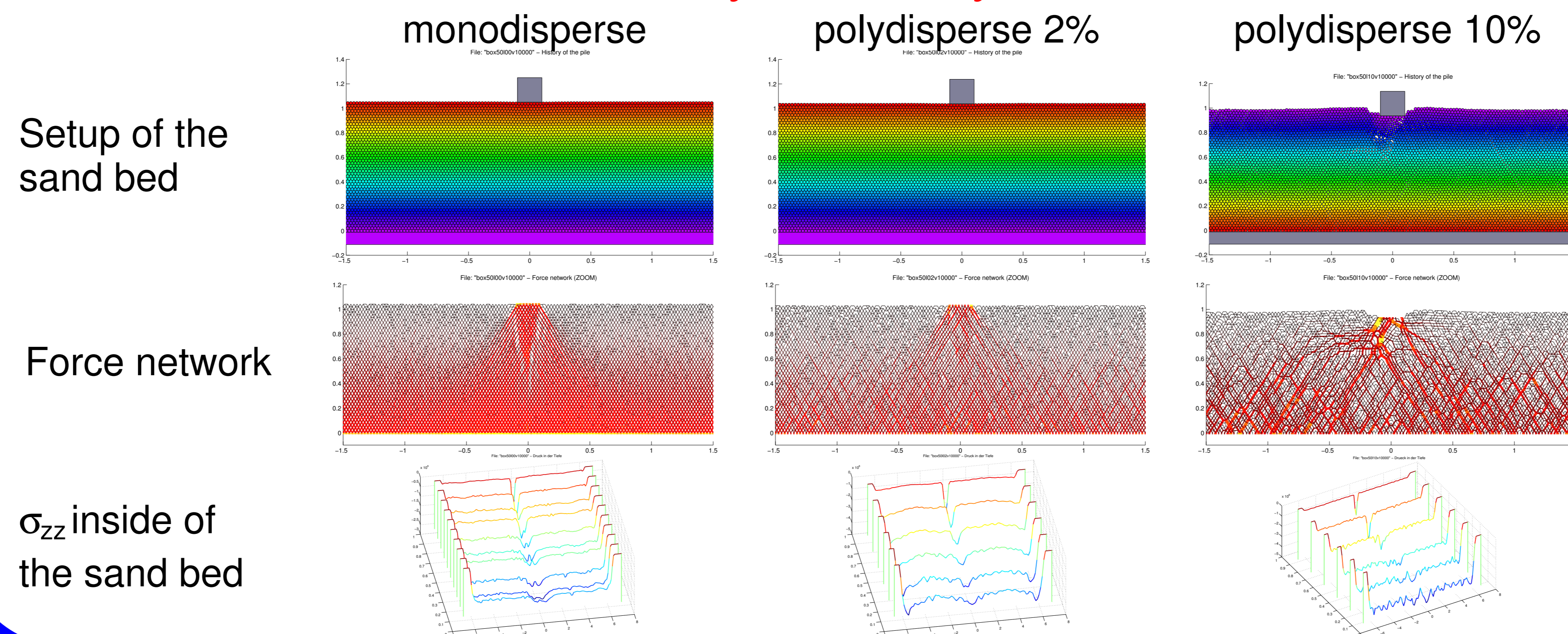
FPA Fixed Principal Axis



Thin Layer – 20 layers



Thick Layer – 50 layers



Thin layer – disordered

